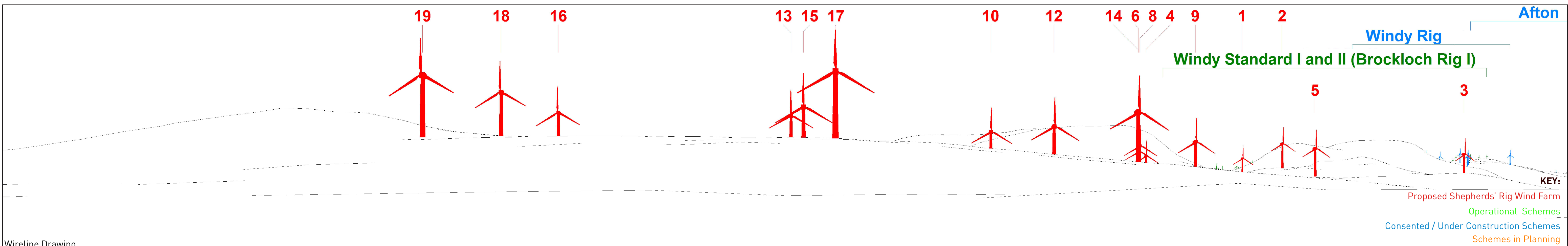




Baseline Photograph



Wireline Drawing

AEI Figure 8.40 (sheet A)
Viewpoint 4: Smittons Bridge
 SHEPHERD'S RIG WIND FARM

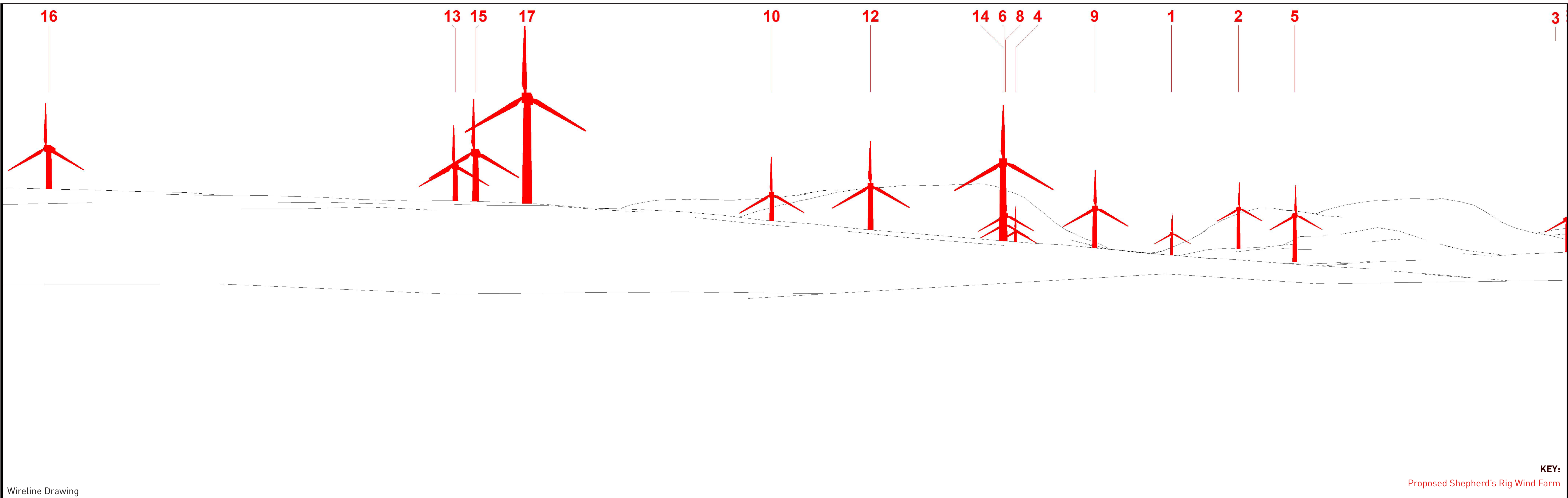


Viewpoint Information
 OS Reference: E 263406 N 591856
 Ground level: 187m (AOD)

Distance to nearest turbine: 1320m (T17)
Bearing to centre of photograph: 312.7°

Angle of view: 90° (cylindrical)
Principal distance: 500mm

Camera: Canon EOS 5D Mark III
Lens: 50mm Fixed Focal Lens
Height: 1.5m
Date & Time: 24/05/2018 08:54



Wireline Drawing

KEY:
Proposed Shepherd's Rig Wind Farm

AEI Figure 8.40 (sheet B)
Viewpoint 4: Smittons Bridge
SHEPHERD'S RIG WIND FARM



Viewpoint Information
OS Reference: E 263406 N 591856
Ground level: 187m (AOD)

Distance to nearest turbine: 1320m (T17)
Bearing to centre of photograph: 325°

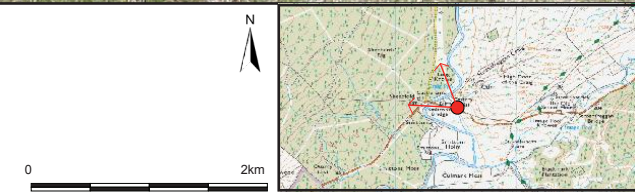
Angle of view: 53.5° (planar)
Principal distance: 812.5mm
Paper size: 841 x 297 mm (half A1)
Correct printed image size: 820 x 260mm

Camera: Canon EOS 5D Mark III
Lens: 50mm Fixed Focal Lens
Height: 1.5m
Date & Time: 24/05/2018 08:54



Photomontage (showing baseline with proposed scheme only)

AEI Figure 8.40 (sheet C)
Viewpoint 4: Smittons Bridge
SHEPHERD'S RIG WIND FARM



Viewpoint Information
OS Reference: E 263406 N 591856
Ground level: 187m (AOD)

Distance to nearest turbine: 1320m (T17)
Bearing to centre of photograph: 325°

Angle of view: 53.5° (planar)
Principal distance: 812.5mm
Paper size: 841 x 297 mm (half A1)
Correct printed image size: 820 x 260mm

Camera: Canon EOS 5D Mark III
Lens: 50mm Fixed Focal Lens
Height: 1.5m
Date & Time: 24/05/2018 08:54